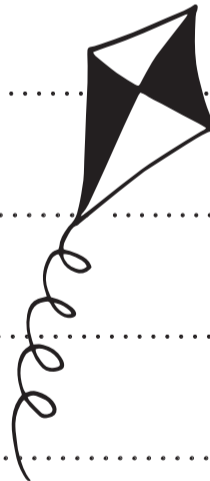
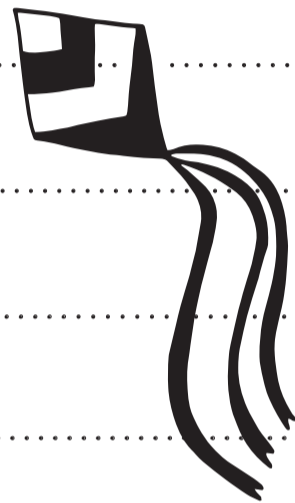


# KITES RESTAURANT

SERVED FROM 8:00 – 11:00am

## GOOD MORNING

SEASONAL FRUIT <small>v GF</small> .....	12
pineapple, cantaloupe, honeydew, orange, seasonal berries, honey yogurt cream, toasted coconut, dried banana	
GREEK YOGURT & GRANOLA <small>v</small> .....	15
berry compote, seasonal berries, chantilly cream	
AVOCADO BREAKFAST TOAST <small>v</small> .....	16
country sourdough, roasted tomato, eggs any style, balsamic syrup, basil	
BUTTERMILK PANCAKES <small>v</small> .....	14
plain, blueberry or chocolate chip, maple butter, powdered sugar	
GOLDEN WAFFLES <small>v</small> .....	14
berry compote, powdered sugar, chantilly cream	
BAGEL & LOX .....	19
cream cheese, cucumber, capers, red onion, tomato	
TWO EGGS ANY STYLE .....	14
bacon or sausage, home fries, choice of toast	
OMELET .....	16
whole eggs or whites, choice of: tomato, mushroom, onions, peppers, cheese, ham or spinach, bacon or sausage, choice of toast	
EGGS BENEDICT .....	16
poached eggs, canadian bacon or avocado, english muffin, home fries <small>v</small>	
THE JERSEY SANDWICH .....	15
two fried eggs, taylor ham, american cheese, brioche bun, home fries	
SOUTHERN FRIED CHICKEN & WAFFLES .....	18
candied pecans, chipotle honey, maple butter	
FLAT IRON STEAK & EGGS .....	29
two eggs any style, bacon or sausage, choice of toast, home fries	



## ON THE SIDE

BACON .....	9	TAYLOR HAM .....	9	BAGEL .....	5
BREAKFAST SAUSAGE ..	9	AVOCADO .....	9	ENGLISH MUFFIN .....	5
CANADIAN BACON ....	9	HOME FRIES .....	9		

# BREAKFAST



Before placing your order, please inform your server if a person in your party has a food allergy.

**V** vegetarian **GF** gluten free

## BEVERAGES

SODA .....	5	STILL WATER .....	10
ICED TEA .....	5	SPARKLING WATER .....	10
JUICE .....	5	ICED COFFEE .....	5
MILK .....	5		

## COFFEE

KIMBO COFFEE: IL CAFE DE NAPOLI .... 5 [REGULAR OR DECAF]

The typical Italian roast gives this blend a perfect balance between sweetness and intensity.

ESPRESSO .....	6	AMERICANO .....	5
DOUBLE ESPRESSO .....	8	MOCHA .....	7
CAPPUCCINO .....	8	HOT CHOCOLATE .....	5
CAFE LATTE .....	7		

## RISHI TEA

EARL GREY .....

Organic Earl Grey combines robust and fruity Thai black tea with mellow, caramel sweet Yunnan Dian Hong. This original blend perfectly complements the floral high notes of geranium and rose found in our first-pressing bergamot essential oil.

JADE CLOUD .....

Jade Cloud is a lively green tea that we created over a decade ago in collaboration with artisans at the Xuan En Organic Yisheng Tea Cooperative in the remote mountains of Hubei province.

CHAMOMILE MEDLEY .....

Our signature chamomile blend highlights golden Croatian chamomile blossoms that are masterfully paired with soothing herbal counterpoints of lemon verbena, lemongrass & spearmint.

MASALA CHAI .....

Classic style of black tea blended with traditional spices native to South & Southeast Asia. The tea base consists of a robust and malty assam balanced.

ENGLISH BREAKFAST .....

Highlights teas from Southeast Asia to produce Rishi's signature profile blend. The origins will vary from time to time, but the blend is always honed to brew consistently.

PEPPERMINT .....

Our pure peppermint leaves hail from the Pacific Northwest, where certain cultivars are prized as some of the most aromatic and potent in the world. We seek a specific strain of *Mentha x piperita* that offers a bright candy cane flavor.

## MILK SHAKES

CHOCOHOLIC .....	10	VANILLA .....	10
STRAWBERRY SHORTCAKE ...	10	SALTED CARAMEL .....	10

GOOD MORNING